



Minet Lacing Technology

MS[®] Fastener

PATENTED PRODUCT

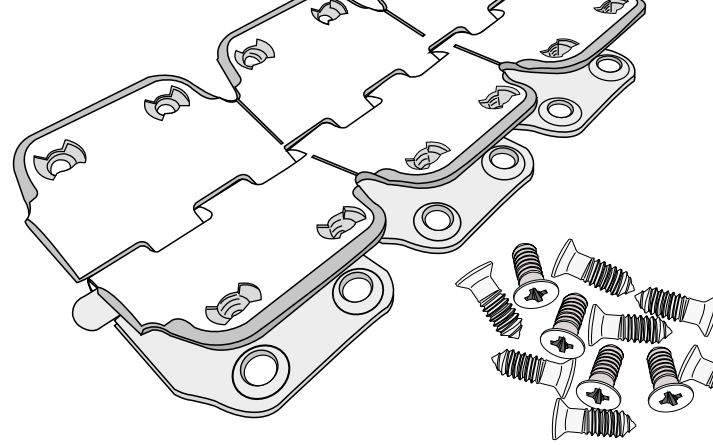
 **MADE IN FRANCE**

Lacings / Heavy duty belts and round baler belts



What's the MS® Fastener ?

The only screw-on fastener that is innovative and easy to install



A Revolutionary Fastener

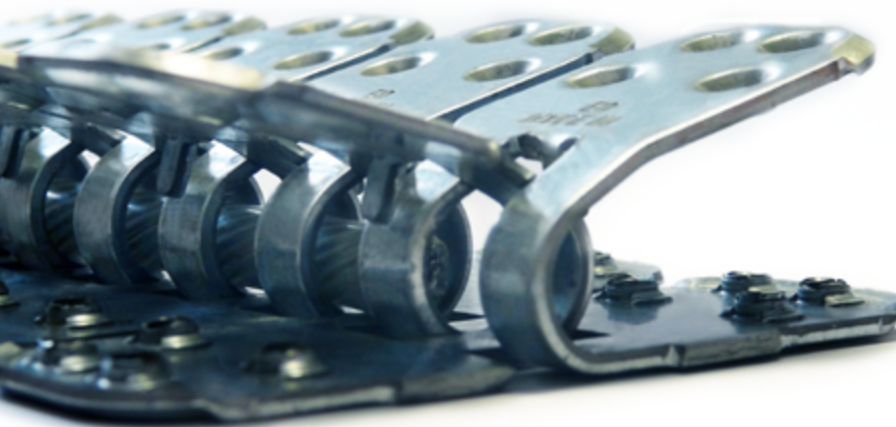
The **MS® Fastener** is an innovative and fast solution to join your belts by simply screwing them together. Designed and patented by MLT, this mechanical splice is extremely easy to install.

It is inspired by rivet fastener technology, bringing a major evolution in its ease of installation. Indeed, the **MS® Fastener** is a metal fastener to be screwed.

The installation screws are self-threading screws: no need to pre-drill or use templates. Screws pass directly through the belt when the fastener is installed (from 3.5 to 18 mm thick).

Also, it's easy and simple installation does not require any special tools: an electric or pneumatic driver is enough.

The **MS® Fastener** then falls into the category as truly revolutionary in the metal fastener market, as it is more economical, practical and safe.



Resistant in all situations

It can be installed on high tensile strength belts: up to 800 PIW (1250N/mm) and pulley diameters from 3" to 18" (75 to 450 mm). Its screws enable you to easily tighten the fastener on the belt with a "vice effect."

By using the stainless steel fastener, the **MS® Fasteners** joins the belts designed for the food, beverage and recycling industries.

Our fasteners are segmented for ease of breaking to your desired width.

The connecting pin is available in diameters from 4 to 10 mm (.3" to .18"). Available in coated steel or in stainless steel coated polyamide.

You can install a clip (washer) on the ends of your connecting pin to prevent migration.



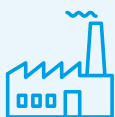
The MS[®] Fastener, effective in your emergency situations

Easy and quick to install!

THE ADVANTAGES

- A powered driver is sufficient for installation
- Quick to install reducing downtime
- No pre-drilling
- Allows you to fix rubber belts in an emergency

Applications



Heavy duty industries



Mines



Cement plants



Quarries and surface mines

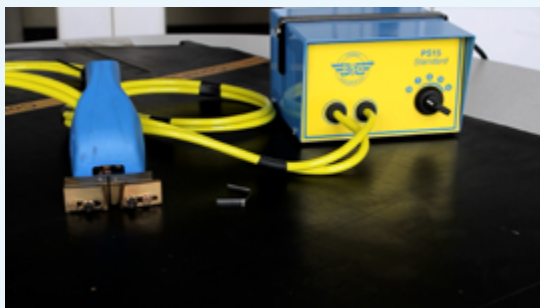


Agriculture

PS-15 skiver

The **PS-15** standard is a high quality skiving tool with an off and 4 heat settings.

This tool can skive on any part of your belt from 1.5mm to a 15 mm depth. Each part is available as a spare part.



Cordless tool kit with skiver and driver

This pack provides you with ready-to-use tools to install most **MLT** products, including the **MS[®]**, consisting of :

- a cordless belt skiver and accessories,
- a cordless powered driver and accessories,
- PPE, etc.

With a total of **17 elements** included in the pack, you will be able to complete your installations easily in record time.

MS[®] Fastener

PATENTED PRODUCT
MADE IN FRANCE



MS25



MS35



MS45



MS55



MS65



Distributor logo

 **MLT GROUP**
Conveyor Solutions Expert

 **MLT GROUP**
Minet Lacing Technology

 **TECHNICGUM**
MLT GROUP

www.mltgroup-conveyor.com - info@mltgroup-conveyor.com